



**28ORI | BN1 2LL
1 BED FLAT**

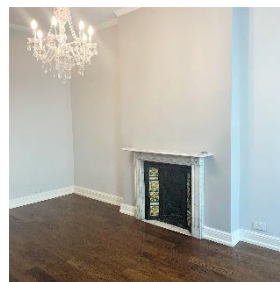
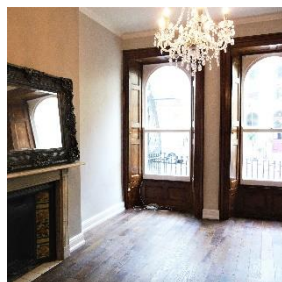
Close to the Seafront |
Fully Refurbished |
Wooden Floors |
Designer Bathroom and
Kitchen

Description:

Located on the raised ground floor of this house in an historic terrace built by the architect Amon Henry Wilds in 1825, close to the famous Brighton seafront. Original features, high ceilings and shutters accompany the magnificent fireplace in the lounge. Oak wooden floors and shutters. The flat has been recently refurbished. The lounge is a good size and lit by 2 large sash windows. The bedroom has built-in storage and room for a king size bed. Along the hall we encounter the white gloss kitchen. At the rear of the flat is the designer bathroom with shower cube bath and grey gloss porcelain tiles. Can be let furnished or unfurnished.

Testimonial:

The flat is great, we moved to the area a couple of years ago. It has the essence of Brighton, great interior and close to the Seafront. B.



FLOORPLAN: 50 M2



EPC RATING: C