



**11UXB | KT1 2LH
1 BED FLAT**

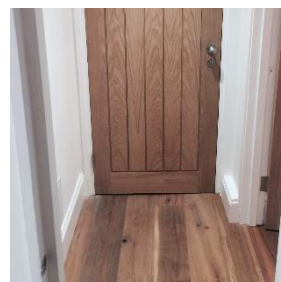
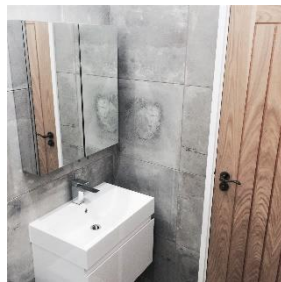
Nearing Perfection |
Original Features | River
Road | High Ceilings |
Huge Communal Garden
and Private Parking

Description:

Raised ground floor flat in this imposing period property. Grand living on a modern scale. The flat was recently refurbished to a superb specification. Solid oak floors and doors throughout and concertina cast iron radiators. The lounge and kitchen are combined. The kitchen complete with all integrated appliances. The Lounge has a huge sash window letting the light pour in. Furnished with 2 sofas, coffee table, dining table and TV unit finished off with a stunning modern chandelier. The bedroom is completed with high ceilings, chandelier, large wardrobe, king size bed and nightstands and lamps. Concrete effect tiles complete the modern bathroom. The manicured communal garden and private parking area are an extra bonus.

Testimonial:

*The flat itself is stunning-
really modern and
finished to an excellent
standard,
Communication has been
superb, nothing was ever
too much to get sorted.
I would highly
recommend! Dillon*



FLOORPLAN: 36 M2

GROUND FLOOR
426 sq ft (39.5 sq m) approx.



THE INFORMATION CONTAINED HEREIN IS FOR INFORMATION ONLY AND DOES NOT CONSTITUTE AN OFFER OF A FLAT. THE INFORMATION IS NOT INTENDED TO BE RELIED UPON FOR ANY PURPOSE AND IS NOT A CONTRACT. THE INFORMATION IS NOT INTENDED TO BE RELIED UPON FOR ANY PURPOSE AND IS NOT A CONTRACT.

EPC RATING: D